

FURNITURE LAYOUT	
SYMBOL	DESCRIPTION
	DINING TABLE 900x900 HT @ 750mm (QTY 16) 32mm OAK VENEER TOPS WITH 30mm Ø ROUNDED CORNERS (COLOUR TBC) BLACK STABILISER BASES WITH ROUND FLOOR BASES
	BAR TABLE 1600x800 HT @ 1100mm (QTY 3) 32mm OAK VENEER TOPS (COLOUR TBC) FIXED ON OAK TURNED SOLID LEGS
	DINING TABLE 900x700 HT @ 750mm (QTY 5) 48mm OAK BORDER WITH MOSAIC STONE INLET FLUSH WITH BORDER TOPS WITH 30mm Ø ROUNDED CORNERS (COLOUR TBC) FIXED ON BLACK STABILISER BASE WITH ROUND FLOOR BASES
	ROUND BENCH SEATING TABLE 1500Ø HT @ 750mm (QTY 4) 32mm OAK VENEER TOPS (COLOUR TBC) FIXED TO A BLACK POWDERCOATED STEEL BASES 76x38 SQUARE TUBING
	ROUND TABLE 900Ø HT @ 750mm (QTY 6) STONE TOP 'INFINITY-CRYSTAL ICE WITH OAK VENEER PLINTH AS STONE SUPPORT FIXED TO A BLACK STABILISER BASE WITH ROUND FLOOR BASE
	ROUND SIDE TABLE 500Ø HT @ 600mm (QTY 10) ROYAL PEACOCK STONE TOP WITH PLINTH UNDER FIXED ON 12mm STEEL ROD UPRIGHTS FIXED TO ROUND 12mm STEEL ROD BASE
	COFFEE TABLES 1800mmx600mm HT @ 450mm (QTY 3) 6mm INFINITY-CRYSTAL ICE TABLE TOP FIXED ON OAK SUPPORT (OAK TURNED LEGS)
	BAR STOOL W:480 x D:500 x H:1030mm, SEAT HEIGHT 750mm (QTY 12) TIMBER FRAME AND VINYL UPHOLSTERY

FURNITURE LAYOUT	
SYMBOL	DESCRIPTION
	DINING CHAIR: W:600 x D:600 x H:800mm (QTY 18) TIMBER FRAME SEAT UPHOLSTERY VINYL. BACK AND SIDE UPHOLSTERY FABRIC
	W:720 x D:900 x H:1050mm (QTY 4) LOUNGE CHAIR FABRIC-COVERED ON POWDER COATED ALUMINIUM BASE COLOUR TO SPEC
	W:600 x D:600 x H:800mm (QTY 64) DINING CHAIR 1 - TIMBER FRAME AND VINYL UPHOLSTERY
	W:600 x D:600 x H:800mm (QTY 20) DINING CHAIR 2 - TIMBER FRAME AND VINYL UPHOLSTERY
	D:450 x H:450mm (QTY TOTAL 8) OTTOMAN WITH TASSEL DETAIL - UPHOLSTERED FABRIC SEAT WITH PIPING, TASSEL BASE DETAIL
	D:700 x H:800mm (QTY TOTAL 6) TUB CHAIR - FABRIC UPHOLSTERED SEATING WITH VINYL PIPING AND VINYL UPHOLSTERED BACK
	WAITERS STATION - STONE CLADDED ON INSIDE AND OUTSIDE. WITH VENEER DOORS, MELAMINE CARCASS AND ADJUSTABLE SHELVES. SEE DETAILED DRAWING: Stages-FP-Det-011 (DETAIL 4)
	GROOVED OAK VENEER EXTERIOR. PLANTER BOX CONCEALED WITHIN (QTY x2) W2200 X D:300 X H:1200mm SEE DWG: STAGES-FP-DET-011
	GROOVED OAK VENEER PLANTER (QTY x1) W5320 X D:400 X H:725mm SEE DWG: STAGES-FP-DET-012

FURNITURE LAYOUT	
SYMBOL	DESCRIPTION
	CHESTERFIELD SOFA W: 2400 X D: 900 X H:800MM (QTY 3) LEATHER DEEP BUTTONED
	BACK TO BACK HALF MOON BENCH SEATING BENCH (QTY x2): R: 1500 X D:700 X H:1000mm PLANTER: W: 2400 x D:650 X H:1200mm, WITH DIVIDING PLANTER AND WAITERS STATION. INCLUDES 4x ELECTRICAL MULTI SOCKETS. VINYL UPHOLSTERED SEAT AN BACK. FLUTED BACK SEATING. OAK GROOVED PLANTER BOX. SEE DWG: STAGES-FP-DET-011
	BENCH SEATING WITH PLANTER. 2x BENCH: W: 3000 x D:700 x H:1000mm, 1x PLANTER: W: 3000 x D:300 x H:1200mm, INCLUDES 4x ELECTRICAL MULTI SOCKETS. (QTY x1) VINYL UPHOLSTERED SEAT & BACK. FLUTED BACK SEATING. OAK GROOVED PLANTER BOX SEE DWG: STAGES-FP-DET-011
	BENCH SEATING WITH PLANTER (QTY x1) BENCH: W: 4680 x D:700 x H:1000mm PLANTER: W: 4680 x D:300 x H:1200mm, INCLUDES 4x ELECTRICAL MULTI SOCKETS. VINYL UPHOLSTERED SEAT AN BACK. FLUTED BACK SEATING. OAK GROOVED PLANTER BOX SEE DWG: STAGES-FP-DET-012
	BENCH SEATING WITH PLANTER. (QTY x1) BENCH: W: 4000 x D:700 x H:1000mm PLANTER: W: 4300/900 x D:300 x H:1200mm, INCLUDES 4x ELECTRICAL MULTI SOCKETS. VINYL UPHOLSTERED SEAT AN BACK. FLUTED BACK SEATING. OAK GROOVED PLANTER BOX WITH STEEL HANDRAIL ALONG PLANTER BOX
	BENCH SEATING WITH PLANTER. (QTY X1) BENCH: W: 4510 x D:700 x H:1000mm PLANTER: W: 4680 x D:300 x H:1200MM, INCLUDES 4x ELECTRICAL MULTI SOCKETS. VINYL UPHOLSTERED SEAT AN BACK. FLUTED BACK SEATING. OAK GROOVED PLANTER BOX

GENERAL NOTES:

Site Measurements: Note: All furniture measurements to be confirmed prior to manufacturing. Contractors must take accurate site measurements and confirm all dimensions before beginning any work to avoid discrepancies.

Approval of Designs: Ensure that all supplier and manufacturer product details, designs, and drawings are signed off by the client prior to procurement.

Sample Approval: Provide samples of furniture and finishes to the client for approval before finalizing orders to ensure they meet expectations.

Exclusions: Note that all catering and bar equipment are excluded from the scope of this project.

Layout Compliance: Follow the approved furniture layout meticulously, making sure that all pieces are placed according to the specified dimensions and spacing.

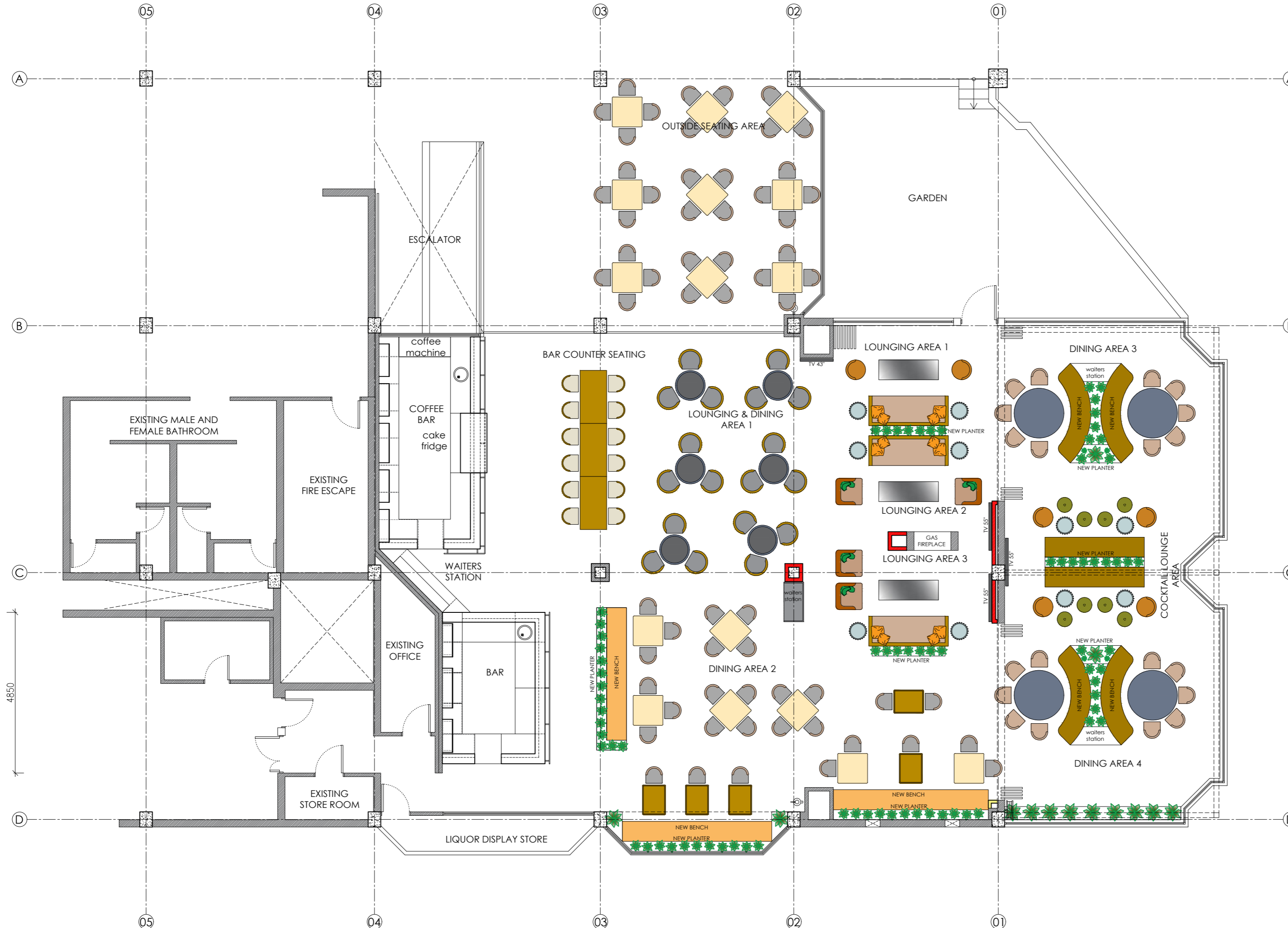
Accessibility Standards: Ensure that the layout adheres to all relevant accessibility standards, providing adequate space for wheelchair access and movement.

Integration with infrastructure: Be mindful of existing architectural features (windows, doors, columns) when placing furniture to ensure a harmonious integration.

Electrical Considerations: Pay attention to the placement of electrical outlets and ensure that furniture that requires power is correctly positioned.

Final Inspection: Conduct a final inspection of the layout with the client before completing the installation to ensure satisfaction and compliance with the approved plans.

NOTE: ALL MEASUREMENTS AND QUANTITIES MUST BE CONFIRMED ON SITE PRIOR TO MANUFACTURING



GROUND FLOOR PLAN - PROPOSED FURNITURE LAYOUT
SCALE 1.100 A2

DATE:	REFERENCE:	DESCRIPTION:
PROJECT TITLE: STAGES - THE THEATRE RESTAURANT		
DRAWING TITLE: GROUND FLOOR: FURNITURE LAYOUT		
DRAWING NO: STAGES-FP-FURN-006	REV: 0	
DATE: 01 October 2024	SCALE: 1.100 A2	
DRAWN BY: Cindy L Jasmin	ISSUED FOR TENDER	
OWNERS NAME & SIGNATURE:		

DOLCE VITA
DESIGNS BY BIANCA
INTERIOR ARCHITECTURE | DESIGN | DECORATING

BIANCA SUTTNER
REGUEIRAS

PHONE: +27 82 308 1653
EMAIL: BIANCA@DOLCEVITA.COM
WEB: dolcevita.com
Postnet Suite 438 Private bag x1
Melrose Arch 2076 South Africa

APD
ARCHITECTURE

TEL: 083 793 0377 | EMAIL:
ARCHITECTURE.APD@GMAIL.COM
REG NO: CK20091106268/23
MEMBERS: CINDY JASMIN |
SACAP REG: PR ARCT - T0732